

Cosmo 15 Function Skin Care System

User Manual | SKU16148



SKIN+ACT

www.skinact.com | www.spaandequipment.com

Toll Free: 1.800.418.0830

Copyright © 2025 SkinAct, All Rights Reserved

NOTICE

No part of this document may be photocopied, reproduced, or translated into any other language without prior written consent of SkinAct.

The information in this document is subject to change without notice at any time and should not be construed as a commitment by SkinAct. SkinAct assumes no responsibility for any errors that may be in this document, nor does it make expressed or implied warranty with regard to this material, including, but not limited to, the implied warranties of merchantability and fitness for a particular purpose.

SkinAct shall not be liable for incidental or consequential damages arising out of the furnishing, performance, or use of this document and the program material which it describes.

SKIN+ACT

www.skinact.com | www.spaandequipment.com

Toll Free: 1.800.418.0830

Preface

Congratulations on your purchase of the Cosmo 15 Multifunction Skincare System from Skin Act Inc. We are confident this system will bring maximum efficiency and convenience to your salon or spa, quickly becoming an invaluable asset to your skincare business. This manual is designed to guide your staff in assembling and operating the Cosmo 15 Multifunction Skincare System correctly. We strongly encourage you to read this manual thoroughly before using the unit. Important Note: The Cosmo 15 Multifunction Skincare System is intended for professional use only. Please consult your state licensing board to confirm specific certification requirements for operating this equipment. This manual is not a substitute for classroom instruction in skincare procedures or for professional Esthetics or Cosmetology training related to general skincare equipment usage. We sincerely thank you for your purchase and hope you enjoy the benefits of the Cosmo 15 Multifunction Skincare System.

Assembly

1. Unpack Components

- Remove all parts from their packaging and identify each item.

2. Set Up the Base

- Place the base unit upright in the desired location.

3. Attach the Head Unit

- Position the head unit on top of the base. Secure it in place using the buckle latches located on each side.

4. Connect the Power Cord

- Insert the power cord into one of the electrical receptacles on the back of the unit.

5. Install the Magnifying Lamp

- Insert the magnifying lamp into its mounting bracket.
- Loosen the adjustment knobs to reposition the lamp into a convenient position, then re-tighten the knobs.
- Plug the magnifying lamp power cord into one of the electrical receptacles on the back of the unit.

6. Set Up the Steamer Unit

- Insert the assembled steamer into its mounting bracket.
- Plug the steamer power cord into one of the electrical receptacles on the back of the unit.
- a. **Note:** Route all cords and hoses between the two brackets that secure the accessory tray to the base for a neat setup.

7. Connect the Galvanic Component

- Separate the Galvanic cables by gently pulling them apart.
- Align the guide slot on the plug with the receptacle for proper positioning. Insert the plug into the galvanic receptacle and tighten the retainer ring to secure it.
- Attach the passive (rod) electrode to the plug on the black wire and place it in its holder on the accessory tray.
- Place the working electrode into its holder on the accessory tray.

8. Connect the Rotary Brush Component

- Align the guide slot on the rotary brush plug with the receptacle and insert it gently. Tighten the retainer ring to secure it.
- Place the rotary brush handle in its holder on the accessory tray.

Assembly

1. Vacuum/Spray Component

- Connect the black-tipped hose securely to the vacuum nozzle.
- Attach the gray-tipped hose securely to the spray nozzle.
- Place the unattached ends of the hoses into the designated slots on the accessory tray.
- Position the spray bottles in the spray bottle holders on the accessory tray.

2. High-Frequency Component

- Insert the plugged end of the high-frequency cord into its receptacle, ensuring the guide slot on the plug aligns properly with the receptacle.
- Gently push the plug into place and tighten the retainer ring to secure it. (For C992T models only)
- Store the high-frequency handle in its designated holder on the accessory tray.

3. Wood's Lamp Component

- Remove the protective shield covering the lamp (used for protection during shipping and storage).
- Attach the hood to the Wood's lamp. (Use the hood in environments where lighting cannot be dimmed.)
- Thread the lamp's cord and handle through the non-elastic opening of the hood, keeping the seam on top.
- Adjust the elastic opening around the bottom of the Wood's lamp to ensure a snug fit.
- Plug the Wood's lamp power cord into one of the electrical receptacles on the back of the unit.
- Place the Wood's lamp into the designated holding tray located on the side of the base.

Precautions

FOR PROFESSIONAL USE ONLY

1. To ensure safety and reduce the risk of electric shock:
2. Always unplug the Cosmo 15 Multifunction Skincare System when not in use.
3. Do not use the device while bathing.
4. Avoid placing or dropping the unit into water or any other liquid.
5. If the unit falls into water, do not attempt to retrieve it. Unplug it immediately.
6. To minimize the risk of burns, electric shock, fire, or injury:
7. Never leave the Cosmo 15 System unattended while in use.
8. Do not allow children to operate the system.
9. Exercise extreme caution when using the system near individuals who are physically impaired.
10. Use the Cosmo 15 System only for its intended purpose as described in this manual.
11. Do not use attachments not recommended by the manufacturer.
12. Do not operate the Cosmo 15 System if:
13. The cord or plug is damaged.
14. It is malfunctioning.
15. It has been dropped or physically damaged.
16. It has been submerged in water.
17. If the unit is damaged, discontinue use and return it to an authorized service center for inspection and repair.
18. Additional safety guidelines:
19. Keep the power cord away from heated surfaces.
20. Do not use the Cosmo 15 System outdoors.
21. Always connect the unit to a properly grounded outlet, preferably a GFCI outlet.

Contraindications and Client Responsibility

1. Individual contraindications for each function of the Cosmo 15 Multifunction Skincare System are detailed throughout this manual. Please review these sections carefully before performing treatments.
2. It is important to note that there may be other, unknown contraindications associated with this product. Therefore, it is always recommended that your client consult with their healthcare professional before incorporating this product into their spa treatment plan.

Liability Disclaimer:

1. SkinAct, including its officers, directors, employees, and vendors, is not responsible for any claims, damages, injuries, or expenses resulting from a client's use of this product without prior consultation with a healthcare professional or from failing to adhere to the instructions provided. By using this product, you and your client agree to release SkinAct from any such liability.
2. At SkinAct, we are committed to the health and beauty of your clients. While we take every measure to ensure strict quality control and training standards, each client is unique, and spa treatments may affect individuals differently.
3. To ensure the best possible experience, we assume that your client has discussed their spa treatment plan with their healthcare provider and received approval. This step helps ensure their spa experience is safe, beneficial, and supportive of their overall emotional and physical well-being—our shared goal for every treatment.

Prior to Use

1. Connect the main power cord to a functioning 110V AC outlet, preferably a GFCI receptacle.
2. Locate the main power switch on the right side near the top of the stand, directly beneath the control unit. Flip the switch to the "On" position. (Note: The switch may not be immediately visible due to its placement under the control unit.)

Steamer Component

The steamer is one of the most versatile components of the Cosmo 15 Multifunction Skincare System and is frequently used during treatments. Its warm vapor mist offers numerous benefits by preparing the skin for various procedures. By opening the pores and softening oil, dirt, and makeup deposits, the steamer makes cleansing, exfoliation, and extractions more effective and efficient.

Benefits of the Steamer:

1. Opens pores to enhance cleansing.
2. Softens dead skin cells, aiding in exfoliation.
3. Promotes deeper absorption of topical products.
4. Dilates capillaries, improving circulation and delivering nutrients to the skin.
5. Boosts skin hydration when used appropriately.

Operating Instructions for the Steamer

1. Check Water Level Before Each Client
2. Remove the fill cap and add distilled water.
3. Fill the jar to the top red line. Avoid overfilling.
4. Do not add cold water to a hot jar.
5. Never operate the steamer without water in the jar and the jar properly secured.
6. Using Essential Oils (Optional)
 7. Do not add essential oils directly to the water.
 8. I. Unscrew the steam nozzle cap and remove the felt strip.
 9. II. Place 2-3 drops of essential oil onto the felt strip.
 10. III. Reinsert the felt strip and replace the steam nozzle cap.
 11. To change oils, remove the felt strip and replace it with a clean one before adding a new essential oil.
 - a. (Note: Do not add or change oils while the steamer is on to avoid injury.)
12. Preheat the Steamer
13. Turn the steamer on by setting the timer to 20 minutes.
14. When starting from a cold state, allow approximately 10 minutes for the steamer to preheat and begin producing steam.
15. Set Treatment Time
16. Once the steamer begins producing steam, adjust the timer to the desired treatment duration based on the client's skin type and sensitivity:
 17. Normal Skin: 8-10 minutes
 18. Oily Skin: 12-15 minutes
 19. Sensitive/Dry Skin: 3-5 minutes
 20. Rosacea or Couperose (Broken Capillaries): 3-5 minutes
21. Optional: Use Ozone Light
22. Turn on the ozone light switch during the last 5 minutes of treatment.
 - a. (Note: Ozone increases steam visibility and provides a mild antiseptic effect but does not change the steam volume.)
23. Adjust Steamer Arm
24. Loosen the adjustment knob at the back of the unit to position the steam nozzle.
25. Retighten the knob after making adjustments.
 - a. (Note: Never move the arm without loosening the adjustment knob first, as this may damage the arm.)
26. Ensure the nozzle is no closer than 16 inches from the client's face. For clients with couperose or highly sensitive skin, position the nozzle even farther away.
27. Turn Off the Steamer
28. After completing the treatment, turn off the steamer by setting the timer to "0."

Maintenance

1. Empty and rinse the steamer jar every day. The jar is dishwasher safe. Be sure to use a non-foaming detergent. Make sure that all detergent has been thoroughly rinsed off the jar before it is replaced.
2. At least once a week, clean the steamer jar using a solution of one (1) part white vinegar to two (2) parts water.
 - Fill the jar and place it back on the steamer. Let it stand undisturbed for two (2) hours.
 - Do not run the vinegar solution through your steamer.
3. Use a hospital-grade disinfectant to clean the outer surface of the steamer unit.

Troubleshooting

If you encounter any issues with the operation of your steamer, please consult this guide before contacting technical support at 1-800-418-0830.

1. Unit does not turn on

- Ensure the main power switch is in the "On" position.

2. No steam production

- Verify that:
 - The main power switch of the 15-in-1 system is in the "On" position.
 - The steamer unit timer is set past the 10-minute mark.
 - The steamer jar gasket is properly in place and not worn.
 - The jar is filled to the correct level.
 - The water is boiling and there are no leaks.
 - If no steam is visible, turn on the Ozone lamp to make it more visible. If you still don't see steam, check if the Ozone lamp is burning. If it's not, replace the Ozone bulb.

3. Ozone not functioning properly

- Ensure:
 - The ozone switch is in the "On" position (the switch should light up when on).
 - The ozone bulb is lit with a steady pale blue light.
 - If the ozone bulb is not lit, replace the bulb following these steps:
 1. Unplug the steamer.
 2. Remove the nozzle cap and felt strip.
 3. Remove the end cap.
 4. Unscrew the right Phillip's Head screw inside the steamer arm.
 5. Remove the other Phillip's Head screw near the base of the light cover.
 6. Remove the light cover and replace the bulb by rotating it one-quarter turn.
 7. Test the new bulb before reassembling the unit.
 8. If the bulb still doesn't work, replace the starter (which resembles a flashlight bulb with a white cap).

4. Leaking around the jar

- Check the jar and gasket:
 - Gasket: Ensure it is correctly positioned and not deteriorated. Replace if necessary.
 - Jar: Check for any cracks or chips around the jar. If damaged, stop using and replace immediately.
 - Ensure the retaining arm assembly is tightened for a proper seal between the gasket and the jar.

5. Steamer spitting from the steam nozzle

- Check:
 - The steamer jar is not overfilled.
 - The water is free from contamination. If the water appears contaminated:
 - Discard the water in the steamer jar.
 - Clean all parts of the steamer jar assembly (element, gasket, jar) with a non-foaming cleanser (e.g., vinegar and water solution).

6. Water boiling out of the fill cap

- Immediately discontinue use and contact technical services at 1-800-418-0830.

Galvanic

Galvanic current is a direct current that flows in one direction only and has been adjusted to a safe level. The positive current (+ anode) creates an acidic reaction that helps soothe nerves, reduce blood flow, and close pores. The negative current (- cathode) generates an alkaline reaction that stimulates nerves, increases blood circulation, and softens tissues. Please note that when you select the polarity on your unit, it will automatically switch the ground or passive rod (the one the client holds) to the opposite polarity.

Parts/Accessories

- **Roller Electrode:** Ideal for treating larger areas, such as the cheeks and forehead, during desincrustation.
- **Ball Electrode:** Perfect for product penetration or for performing desincrustation on smaller areas.
- **Pen Electrode:** A cylindrical electrode with a hole, designed for targeting fine lines and small areas around the eyes and nose.



Operations/Precautions

- Do not use products containing alcohol when using the 15-in-1; only use water-soluble products.
- Avoid using galvanic current on clients who are pregnant, have heart conditions, or suffer from high blood pressure.
- Do not use galvanic current on clients with a pacemaker or heart condition.
- Galvanic current should not be used on clients with herpes.
- Do not apply galvanic current on clients with edema, infection, inflammation, or telangiectasia (permanent dilation of capillaries and small blood vessels).
- Avoid using galvanic current over areas with broken blood vessels.
- Clients taking minerals may be more sensitive to galvanic current than those who do not.
- Do not perform galvanic procedures on severely dehydrated clients, as they may experience a galvanic burn resembling a sunburn. Dehydrated skin may appear dull and flaccid.
- Clients should feel minimal sensation from the current, though a slight tingling or metallic taste in the mouth may occur if they have dental fillings.
- Always follow desincrustation/purging (-) with iontophoresis.

Pre-Treatment Preparation

1. Ensure both the client and esthetician remove all jewelry before starting the treatment.
2. Thoroughly cleanse the client's skin.
3. Verify that all electrode wire connections are securely attached to the unit.
4. Choose the desired electrode (roller, plate, ball, or pen) and screw the threaded end of the pen electrode into the galvanic handle with the red wire. Finger tighten—do not over tighten.
 - o Note: The handheld electrode attaches to the black wire, while working electrodes attach to the handle with the red wire.
5. Before powering on the unit, wrap the handheld electrode with a thin layer of moist gauze and place it securely in the client's right hand. The client should hold the rod throughout the entire treatment. Use a liquid that conducts electricity to dampen the cloth (avoid distilled water).
6. Set the intensity of the current to the lowest setting before turning the unit on.

Negative Polarity – Desincrustation Procedure

1. Note: Negative polarity is used for desincrustation, a process that softens and removes hardened sebum. Alkaline solutions stimulate, dilate, and soften skin.
2. Apply a desincrustation solution to the client's face, leaving a light film.
 - a. Note: If you don't have a desincrustation lotion, mix baking soda and water to create a paste. Follow product instructions if using a desincrustation lotion.
3. Turn the power switch to the "On" position.
4. Ensure the intensity control knob is at its lowest setting.
5. Switch the galvanic setting to negative by changing the handles.
6. Place the active electrode on the client's skin.
7. Gradually turn the intensity control knob clockwise to increase the current. Monitor the client's comfort level. If the knob is turned past the "click" or "safe" point counterclockwise, the current stops. A standard working level is between 1 and 2, depending on client sensitivity (levels above 3 are not recommended). The indicator light will go from green to yellow to red.
8. Glide the active electrode over the client's skin.
9. For oily or acne-prone skin, use 10 minutes in the T-zone; 5-7 minutes is recommended for other areas.
10. If contact is lost, turn the intensity knob counterclockwise until resistance is met. Reapply the active electrode and adjust the intensity.
11. If the electrodes touch or the current exceeds the limit, the unit will automatically shut off. To reset, turn the intensity knob counterclockwise until it clicks, then resume treatment.
12. After the procedure, remove product and proceed with extractions.

Pen Electrode Desincrustation (For Smaller Areas)

1. Unscrew the roller electrode from the black galvanic handle and replace it with the pen electrode.
2. Cut a cotton swab in half and insert it into the end of the pen electrode, ensuring the cotton tip touches the metal.
3. Moisten the cotton with desincrustation solution.
4. Use the pen electrode for smaller treatment areas, such as around the nose, upper lip, and/or deeply creviced areas. It can also be used for eye and lip treatments with a positive current.

Positive Polarity – Iontophoresis Procedure

Note: *Iontophoresis is used to penetrate water-soluble solutions. Acidic solutions balance pH, soothe, constrict, and firm the skin.*

1. Select the preferred electrode tip and screw it into the galvanic handle attached to the red wire.
2. Apply a water-soluble ampoule, serum, or light cream to the client's face. Use a product specifically designed for galvanic current penetration.
3. Ensure the client holds the handheld passive electrode, wrapped in a thin damp cloth (use a liquid that conducts electricity, not distilled water).
4. Turn the power switch to the "On" position.
5. Set the intensity control knob to the lowest setting.
6. Place the active electrode on the client's skin.
7. Press the polarity switch to set the unit to positive mode (+). The light next to the button should be red. The electrodes automatically adjust their polarity.
8. Turn the intensity control knob clockwise to increase the current. Monitor the client's comfort level and never exceed level 3. The indicator light will change from green to yellow to red.
9. Glide the active electrode over the skin for 5-7 minutes, ensuring the skin stays moist throughout.
10. If contact is lost, turn the intensity knob counterclockwise until resistance is met. Reapply the active electrode and adjust the intensity.
11. When treatment is complete, turn the intensity control knob counterclockwise past the "safe" point.
12. Turn off the unit when the iontophoresis treatment is finished.

Maintenance

- Clean the electrodes with warm water and a mild antibacterial detergent, then rinse thoroughly.
- Disinfect all other surfaces using a hospital-grade disinfectant.

Troubleshooting

- If you encounter any issues with the operation of your galvanic unit, please refer to this troubleshooting guide before contacting technical services at 1-800-418-0830.

No Current. Check the following:

- Ensure that the galvanic power, main power, and head power switches are all set to the "On" position.
- Verify that the intensity control knob is set to a level that will generate current.
- Confirm that the cables are securely connected to the panel and that the electrodes are properly attached to the wires.
- Inspect the cables for any visible damage, such as breaks or cuts, and replace them if necessary.
- Check that the fuse in the back of the unit is intact; replace it if blown.
- Sudden Increase in Current
- If the current suddenly increases during use, the galvanic unit will automatically shut down. Restart the unit as follows:
 - Turn the intensity control knob to the lowest setting until you hear a click.
 - Reset the current to the desired level.
 - Avoid letting the electrodes touch, as this will cause the galvanic unit to shut down.

Rotary Brush Unit

The Rotary Brush Unit is designed for use on both the face and body, offering a range of brush options for enhanced versatility. Its primary function is to deliver a deep cleanse by removing dirt, excess sebum, and impurities from the skin's surface and pores. It also aids in light callus removal on the hands and feet. When paired with the appropriate cleansers and attachments, the unit can provide gentle exfoliation. The brush's massaging action not only promotes relaxation but also creates a soothing, pampering experience for the client. The rotary brush unit can be used with warm water or any type of cleanser, such as cleansing milk, gels, or foaming formulas.

Parts/Accessories

Attachments and Their Uses:

Small Pumice Attachment – This attachment is made of hard solid pumice. It is not to be used on the face. It is often used to soften callused areas on the feet. (Note: The treatment area needs to be moistened.)

Large Sponge Attachment – It is frequently used at low speeds. It can also be used on skin that is ultra-sensitive. (Note: The sponge is very porous and must be cleaned carefully to remove/destroy bacteria.)

Large Foam Attachment – The foam attachment is not be used on the face. It is frequently used on dry areas, i.e. dry elbows, ashy knees.

Large Goat Hair Brush – It is used for larger areas of the skin, i.e., the décolleté, chin, neck, cheeks, and forehead. It is also used for back treatments.

Small Goat Hair Brush – It is used for smaller, more sensitive areas, i.e. around the nose, the mouth, eyes, etc.

Rotary Brush Handle



Operations/Precautions

- Avoid using on couperose (rosacea-prone) skin.
- Handle the unit carefully to avoid damaging the motor inside the handle.
- Never obstruct the brush's rotation while the power is "On."
- Do not pull or twist the cord. To unplug the unit, gently grasp the plug at the outlet and pull it out.
- After use, place the rotary brush handle back into its storage slot.

Instructions For Use

Prior to Treatment

1. Cleanse the treatment area using a light cleanser.
2. Steam the treatment area with facial steamer or warm towels.
3. Choose an attachment that suits the type and condition of the client's skin, the area to be treated, and the objective of the procedure.
4. Insert the attachment by pushing it into the rotary brush handle until it is secure.
5. Apply cleansing product generously over the entire treatment area. (Add warm water to the cleanser as needed.)

Rotary Brush During Treatment

1. Moisten the selected brush or attachment with water, then remove any excess by gently tapping it against a spa towel.
2. Place the brush or attachment on the skin before turning the unit on to prevent splattering. Use light pressure and hold the brush vertically against the skin. Pressing too hard may irritate the skin and damage the brushes over time. Turn the power switch to the "On" position. Precaution: Begin the procedure with the RPM control knob at its lowest setting to avoid product splattering.
3. Start with a low rotation speed to minimize friction and irritation. Adjust the speed gradually.
4. Use the Directional Switch on the Rotary Brush Handle to select the direction:
5. To the right for a clockwise motion.
6. To the left for a counterclockwise motion.
 - a. (Note: Some professionals alternate directions during exfoliation—clockwise for one pass, followed by counterclockwise for an additional pass for a thorough exfoliation.)
7. Adjust the RPM speed slowly.
8. Use lower speeds for dry, sensitive skin.
9. Use higher speeds for coarse or thick skin.
10. To reverse the rotation:
11. Turn the RPM control knob to the lowest setting.
12. Set the Directional Switch to the "Off" position.
13. Allow the brush to come to a complete stop.
14. Switch the Directional Switch to the opposite position.
15. Resume the treatment, gradually increasing the RPM speed.
16. To finish the procedure or change attachments:
17. Turn the RPM control knob to the lowest setting.
18. Set the Directional Switch to the "Off" position.
19. Wait for the brush to stop completely.
20. Remove the brush/attachment with sufficient force, pulling it straight out of the Rotary Brush Handle. Clean with a mild disinfectant.
21. End the procedure or choose another attachment to continue.

Maintenance

1. Do not sterilize attachments in a UV sterilizer, as this will discolor the plastic and shorten the life of the natural bristles.
2. Clean the surfaces of the rotary brush handle using a hospital-grade disinfectant or 90% alcohol.
3. Do not immerse the rotary brush handle in any liquid.
4. Clean brushes after each use:
 - a. • Sanitize with hot, soapy water.
 - b. • Soak in a hospital-grade

Troubleshooting

1. If you experience problems with the operation of the rotary brush unit, please consult this troubleshooting guide before calling technical services at 1-800-418-0830.

If the unit does not work, check to ensure that:

1. The main switch is set to the “On” position.
2. The RPM control knob is turned to a position that will create rotation.
3. The directional switch is set to one of its “On” positions.
4. The rotary brush handle is securely attached to the main unit at the rotary brush handle receptacle.
5. The fuse in the back of the unit is not blown. Replace if necessary.
6. The attachments are firmly inserted into the handle.

Vacuum and Spray Component

The vacuum component is designed to cleanse the skin and provide mild mechanical massage. The size and style of the cupping glass is an important determining factor in the amount of cleansing versus massage that will occur. The spray component is used in combination with the vacuum component. It creates a fine, even mist and can be used during treatment to rinse, moisten, soothe or apply tonics. This component is used to flush out the freshly vacuumed pores after the vacuum treatment. The spray component has two (2) bottles, allowing you to have more than one product prepared and ready to use.

The vacuum system is equipped with three (3) cupping glasses:

- **Blackhead (bent) cupping glass without vent** – Used to cleanse small contoured areas (nose area, lip area, etc.). It is used for loosening impactions, not for extracting them. To use, the round tip of the cupping glass goes over the end of the hose.
- **Wrinkle (flat) cupping glass with vent** – Uses vacuum and a pulsating massage to temporarily improve lines and wrinkles while improving the condition of the skin. When using the wrinkle cupping glass you are stimulating circulation – improving nutrition to the skin and removing impurities. It is generally used on large surface areas such as the neck, chin, cheeks, and forehead. To use, the tapered end of the cupping glass goes into the hose.
- **Straight (round) cupping glass with vent** – Designed to increase the level of massage, in addition to removing oils, dead surface cells, and impurities. This glass can be used on any area of the face, but is frequently used in small areas such as the nose, upper lip, and between the eyebrows. To use, the tapered end of the cupping glass goes into the hose.

You may use any or all of these cupping glasses during a procedure, depending on the needs of the client and the area being treated. No other cupping glasses such as lymphatic cupping glasses should be used with the Vac/Spray unit.

Cupping Glasses

The spray component is equipped with two spray bottles. Therapists often use one bottle for normal/oily skin and another antiseptic bottle for mature, dry or sensitive skin.

Operations/Precautions

When Using Vacuum Function:

Do not use on couperous, or bruised skin, open wounds or on clients who have had face lifts. This procedure is safest and most effective when performed after steaming, desincrustation, and/or brush cleansing. Ensure that the suction power/pressure is not strong enough to pull or drag the skin. Move cupping glass continuously over the skin. Avoid delicate eye area. Do not use excessive pressure on cupping glasses.

When Using Spray Function:

Bottles should only be filled to two-thirds (2/3) capacity. Do not use flammable products in spray bottles! Never hook the spray bottle to the Vacuum Hose!

Instructions For Use

Vacuum Function – Getting Started

1. Choose the appropriate cupping glass.
2. To prevent product or skin impurities from being suctioned into the vacuum hose or assembly, place a piece of cotton in the cupping glass before beginning the vacuum procedure. The cotton should be large enough to trap impurities, and small enough to allow for proper suction.
3. Using a slight twisting motion, securely attach one tip of the hose to the cupping glass, and the other tip to the main unit. If using the straight or wrinkle cupping glass, push the tapered end of the glass into the hose. If using the blackhead cupping glass, push the round end of the glass over the hose.
4. Turn the power switch to the “On” position. Set the vacuum adjustment knob to the lowest setting. Test the vacuum power on the client’s neck below the ear.
5. Increase the vacuum power slowly by turning the vacuum adjustment knob to the right until you reach the desired amount of vacuum for the client’s skin type and condition. Use with caution.
6. Follow the vacuum pattern outlined below.

Vacuum Pattern Guidelines

- 1. Neck** - Begin at the center of the neck and move outward.
- 2. Under the chin** – Begin in the center of the chin and move outward along the jawbone.
- 3. Chin and Cheeks** – Begin at the center of the chin and move outward toward the ear. Continue upward, starting along the edge of the nose and moving outward toward the ear.
- 4. Forehead** – Begin in the center of the forehead and move outward toward the temple.
- 5. Nose** – Using a small cupping glass, vacuum the nose, moving upward toward the bridge of the nose. You may need to support the nose with your free hand.
- 6. Between the Eyebrows** - With the small cupping glass, vacuum the area between the eyebrows.
- 7. Upper Lip** – With the small cupping glass, vacuum the upper lip. Begin directly under the nose and work outward toward the corner of the mouth.



Vacuum Techniques for Cupping Glasses with Vent:

(Note: When using the cupping glasses with vents, you are performing a pulse massage. You are not deliberately extracting debris. However, a debris filter should be in place to avoid contaminating the Vac/Spray unit.)

1. Apply a light moisturizing serum to provide slip for the cupping glass.
2. Utilize appropriate technique for desired result.
 1. Tapping technique - Use the round cupping glass. Move the glass over the treatment area while tapping the index finger over the vent to create a pulsing or massaging action.
 2. Glide and release technique - Use the wrinkle cupping glass. Move the glass over the treatment area while keeping the index finger over the vent to maintain vacuum. Release the vacuum by lifting your finger from the vent before removing the glass from the skin.
3. To create suction, placing your finger over the vent hole. When the finger is raised, suction power is lost.
4. Follow the vacuum pattern described above.
5. Change the cupping glass by gently twisting it out of the vacuum hose.
6. Remove and dispose of the cotton filter.

(Note: Change the cotton filter and thoroughly clean the cupping glass with an antimicrobial solution after each client.)
7. Return the vacuum adjustment knob to the lowest setting of intensity.

Technique for Using Blackhead Cupping Glass (No Vent):

1. Since there is no vent on the blackhead cupping glass, you must be very careful with the amount of vacuum used. Start on a very low setting and increase the amount of vacuum slowly.
2. The blackhead cupping glass is used to loosen blackheads, not extract them.
3. Begin by placing the tip of the cupping glass on the skin. Then begin adjusting the vacuum pressure.
4. Start at outer edge of the blackhead and circle slowly around it to loosen it. You may see the comedo begin to rise out of the skin, but you should not use the cupping glass to extract it.
5. Before you break the seal between the cupping glass and the skin, turn the vacuum pressure down to the lowest setting.
6. Change the cupping glass by gently twisting it out of the vacuum hose.
7. Remove and dispose of the cotton filter.

(Note: Remove the cotton filter and thoroughly clean the cupping glasses with an anti-microbial solution after each client).

Spray Component

Precaution: Do not use flammable products in spray bottles!

1. Cover the client's eyes with moistened eye pads.
2. Fill the bottle two-thirds full with liquid. You may use distilled water, herbal infusion teas to calm the skin, or toners to balance the pH of the skin.
 - o (Note: The Vacuum and Spray unit comes with two spray bottles. Therapists often use one bottle for normal/oily skin, and another bottle for antiseptic or a mild skin lotion for mature, dry, or sensitive skin. You may want to fill one with a toner and the other with a herbal infusion. If you have different substances in the bottles, be sure to clearly mark them).
3. After filling the bottle with liquid, turn the lid gently until it stops. Do not over tighten. If extreme pressure is exerted on the lid, it may crack.
4. Attach the bottle to the spray hose (Note: The hose should be securely attached to the main unit and the spray bottle). Never hook the spray bottle to the Vacuum Hose!
5. The power switch should be set to the "On" position.
6. Test the spray by placing index finger on top of the hole. Remove finger from the hole to discontinue mist. Point the spray away from the client when testing.
7. Always keep the bottle in an upright, vertical position to prevent clogging and spitting.
8. Aim the opening of the spray bottle towards the treatment area, maintaining a distance of no closer than 12" (twelve inches).
9. Protect the client's mouth and eye area with your hand.
10. Spray the décolleté, the neck area, and the face. It is best to start in the neck area first so that the client is aware of what you are doing. If you began by spraying the face, you may startle them.
11. Turn the Vac/Spray Power Switch to the "Off" position when not in use.
12. Disconnect the spray bottle from the hose when treatment is complete.
13. Unplug the unit when not in use.

Maintenance

1. At least twice a week, clean the bottles in warm water and mild antibacterial detergent. Rinse well.
2. Clean all other surfaces with hospital-grade disinfectant.

Troubleshooting

Vacuum

1. If there is no vacuuming action, check to ensure that:
 - The vacuum hoses are tightly connected to the proper socket.
 - The main power switch is set to the “On” position.
 - The vacuum adjustment knob is turned to a position that will create a vacuum.
 - The hose connections at the unit and the accessory are secure and unobstructed.
 - The hoses are not damaged (cut, split etc.).
 - The fuse in the back of the unit is not blown.
2. If the vacuum adjustment knob is hard to turn, remember that it will retain some resistance throughout use.

Spray

1. If there is no spray action, check to ensure that:
 - The spray bottle is attached securely to the air line.
 - The main power switch is set to the “On” position
 - The panel power switch and spray power switch are set to the ‘on’ position
 - The hose connections at the unit and the spray bottle are secure and unobstructed
 - The hoses are not damaged. (cut, split etc.)
 - The fuse in the back of the head is not blown. Replace if needed.
2. If the spray becomes inconsistent or spotty:
 - Empty the spray bottles and clean with warm water and mild detergent. Rinse well.
 - Soak cap in 90% alcohol for 3 to 4 hours then rinse with warm water. Spray warm water through cap until clean.
 - Do not spray alcohol through the cap. It may create a fire hazard.

High Frequency

The high-frequency instrument transmits high frequency current that can benefit the skin in many ways. The use of High Frequency on the skin’s surface stimulates glandular activity, increases the circulation of blood, creates germicidal action, and helps skin-care products penetrate deeper in the skin, and creates deep heating without affecting the muscles.

Parts/Accessories

Attachments:

- Mushroom Electrode (treats larger areas of the face and body – often used in circular motions on the client’s face and neck.)
- Spot Sparkling Electrode (treats acne and inflammation).
- Spoon Electrode (for around the nose, mouth and other curved areas).



Instructions For Use

How the Electrodes Function

High frequency energy causes some of the atoms inside the glass tube to become charged. Electrons are forced off the atoms, creating charged particles called ions. Electricity flows through the charged particles. Ultraviolet rays are created within the tubes causing the argon gas to glow.

Prior to Beginning Direct or Indirect Treatment

1. Both the client and the esthetician should remove all jewelry.
2. Make sure the client cannot touch any metal objects – be particularly careful that they are not touching
3. the metal frame of the treatment chair or couch.
4. The client should remove his/her contact lenses before beginning this procedure.
5. Explain to the client what they will feel during the high frequency treatment, describing the sparking sensation in detail.

Use of electrodes.

- Before inserting an electrode in the high-frequency handle, inspect the slot where the electrode will be inserted to make sure it is free of dust and/or debris. If there is any dust or debris, remove it.
- Check the electrodes to ensure that they are firmly seated in the handle (to prevent possible damage to the electrodes).
- Do not touch the metal end of the electrode.
- Clean the end with alcohol pad and allow drying before placing electrode in handle.
- Do not use excessive force when pushing the electrodes into the high-frequency handle. This could break the electrodes.
- Always insert and pull the electrode straight in or out of the handle. Never twist.
- Turn the high-frequency unit “Off” when changing electrodes.
- Direct Technique (soothing)

How the Electrodes Function

High frequency energy causes some of the atoms inside the glass tube to become charged. Electrons are forced off the atoms, creating charged particles called ions. Electricity flows through the charged particles. Ultraviolet rays are created within the tubes causing the argon gas to glow.

Prior to Beginning Direct or Indirect Treatment

1. Both the client and the esthetician should remove all jewelry.
2. Make sure the client cannot touch any metal objects – be particularly careful that they are not touching the metal frame of the treatment chair or couch.
3. The client should remove his/her contact lenses before beginning this procedure.
4. Explain to the client what they will feel during the high frequency treatment, describing the sparking sensation in detail.

Use of electrodes.

- Before inserting an electrode in the high-frequency handle, inspect the slot where the electrode will be inserted to make sure it is free of dust and/or debris. If there is any dust or debris, remove it.
- Check the electrodes to ensure that they are firmly seated in the handle (to prevent possible damage to the electrodes).
- Do not touch the metal end of the electrode.
- Clean the end with alcohol pad and allow drying before placing electrode in handle.
- Do not use excessive force when pushing the electrodes into the high-frequency handle. This could break the electrodes.
- Always insert and pull the electrode straight in or out of the handle. Never twist.
- Turn the high-frequency unit “Off” when changing electrodes.

Direct Technique (soothing)

1. If you have not already done so (as part of another treatment), apply a non-flammable product (cream or mask) to the skin to provide slip for the glass probe as it moves over the client's skin.

(Note: Only use products that are water-soluble when using high frequency. DO NOT use any products that contain alcohol or any other flammable liquid. Instead of a product, you may use a thin piece of gauze on the face to provide slip.)

2. Turn the intensity of the current as low as it will go before turning the high-frequency unit "On" or "Off".

3. When performing this technique:

- Hold the high-frequency handle below the taper without touching the handle above the taper will draw current from the electrode.
- Place your finger on the electrode.
- Turn the high frequency unit "On".
- Position electrode on client's skin.
- Remove finger from the electrode.

Set the intensity level after you have positioned the skin.

(Note: Set the final intensity according to client's comfort level, skin condition, and sensitivity level. Monitor the client's comfort level closely.)



- Hold the high-frequency handle below the taper without touching the handle above the taper will draw current from the electrode.
- Place your finger on the electrode.
- Turn the high frequency unit "On".
- Position electrode on client's skin.
- Remove finger from the electrode.



(Note: If you break contact with the client's skin, repeat Step 3.) Proceed with the treatment. Using one of the facial electrodes, start at the neck and using small circular movements, work upward to the jaw, cheeks, chin, nose and forehead.

Indirect Technique (soothing)

1. The client should hold the indirect (straight) electrode securely with both hands. One hand should hold the handle while the other hand grips the tip of the electrode.

2. Cover the electrode with a cheesecloth or 1-ply gauze for comfort if needed.

3. Before turning the high-frequency unit "On":

- Check to ensure that the client is holding the
- electrode securely.
- Make contact with the client by placing one hand on his/her skin at the treatment area.
- Proceed with massage techniques

4. Turn the high-frequency unit “Off” before removing both hands from the client, whether ending the treatment or changing treatment areas. Do not break contact with the client’s skin while current is flowing.
5. The client should feel little or no sensation from the high-frequency current during this technique.

Sparking/Fulguration Technique (stimulating)

The client will feel a slight sensation during this technique, due to the exchange of the current between the electrode and the client’s skin. Keep the intensity well within his/her comfort level. This technique requires the acne-sparking electrode.

1. Insert the Acne Sparking Electrode into the handle.
2. Turn the high-frequency power switch to the “On” position.
 - The high-frequency current should be at the lowest setting before turning the switch “On”, in other words, the intensity control knob should be turned to the far-left position.
3. Hold the electrode a fraction of an inch away from a pustule until you see a slight spark “arc” between the electrode and the skin.
4. Slowly increase the intensity of the current by turning the intensity control knob until the client’s comfort level is achieved.
5. Treat each pustule or comedone for approximately 15-20 seconds each until all have been treated.
6. End the procedure by turning the intensity control knob to its lowest setting.
7. Place the high-frequency power switch to the “Off” position.

Maintenance

1. Use a hospital-grade surface disinfectant to clean the electrodes. Wipe the electrodes with a damp cloth.
2. Do not immerse the electrode in any liquid.
3. Do not put electrodes in an UV sterilizer.

Troubleshooting

If you experience problems with the operation of your high frequency unit, please consult this troubleshooting guide before calling technical services at 1-800-418-0830.

If there is no current, check:

- The all switches are set to the “On” position.
- The handle cord is securely plugged in to the unit.
- If one of the electrodes does not work as it should test the other 3 to see if they have the same problem.
- If it’s just the one electrode, replace the electrode. If it is all 3, replace the handle.
- The fuse in the back of the unit is not blown.

Magnifying Lamp Component

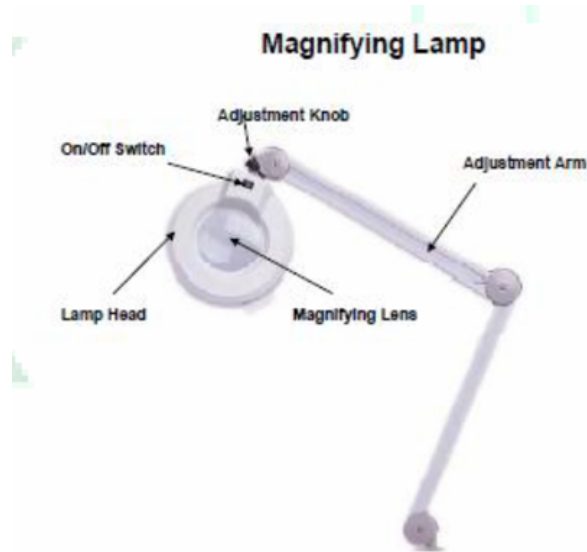
Most therapists consider the magnifying lamp an important diagnostic tool. It is used early in the session to analyze the complete treatment area. It is also used to monitor skin reactions throughout the session. These examinations will determine which products and procedures should be used during a treatment. The light is fluorescent. The light and magnification make it easier for you to identify areas of the skin with extreme precision. The magnifying lamp is also used during manual extraction.

Important: Failure to use the adjustment knobs to position lamp will void the warranty

Parts/Accessories

Most therapists consider the magnifying lamp an important diagnostic tool. It is used early in the session to analyze the complete treatment area. It is also used to monitor skin reactions throughout the session. These examinations will determine which products and procedures should be used during a treatment. The light is fluorescent. The light and magnification make it easier for you to identify areas of the skin with extreme precision. The magnifying lamp is also used during manual extraction.

Important: Failure to use the adjustment knobs to position lamp will void the warranty.



Instructions For Use

Cover the client's eyes with moist cotton eye pads.

2. To reposition the lamp:

- Turn the lamp "Off" using the power switch.
- Loosen the adjustment knobs.
- Position the lamp as desired.
- Tighten the adjustment knobs.

3. Tie excess power cords off with a rubber band or twist-tie - do not coil around base of lamp.

4. Turn the lamp on by moving the power switch to the "On" position.

5. Position the magnifying lens close to the client's skin, over the area to be examined. The lamp should not touch the client's skin.

Maintenance

1. Clean the magnifying lens after each use with glass cleaner or alcohol.

2. Replace the bulb as needed.

Troubleshooting

If you experience problems with the operation of the magnifying lamp, please consult this troubleshooting guide before calling technical services at 1-800-418-0830.

If the lamp does not come on, check to ensure that:

- The main power switch of the 15-in-1 unit is set the "On" position.
- The bulb is firmly seated in its plug.
- The magnifying lamp component is properly plugged into the main unit of your 15-in-1 system.
- The bulb is working properly. Bulbs are available from Universal Companies, Inc.

Wood's Lamp Component

A black light (cold quartz bulb) makes the Wood's lamp component a valuable tool, allowing you to analyze the client's skin condition and decide which product and procedures to use during a session. For best results, the Wood's lamp should be used in total darkness. However, the Wood's lamp is equipped with a hood, which makes it possible to use it in a lighted area. The hood should be positioned so that it completely blocks the client's face from any outside light.

Parts/Accessories

A black light (cold quartz bulb) makes the Wood's lamp component a valuable tool, allowing you to analyze the client's skin condition and decide which product and procedures to use during a session. For best results, the Wood's lamp should be used in total darkness. However, the Wood's lamp is equipped with a hood, which makes it possible to use it in a lighted area. The hood should be positioned so that it completely blocks the client's face from any outside light.



Operation and Precautions

Note: Prior to the first use, remove the protective cover from the back of the Wood's lamp. If the lamp is going to be stored for an extended time, replace the cover to protect the ultra-violet bulbs.

1. The client's skin should be cleansed and allowed to dry before being examined with the Wood's lamp.
2. Cover client's eyes with moist cotton pads.
3. Darken the room or place the Wood's lamp hood over the client's face, so that all external light is blocked.
4. Turn the lamp on by moving the power switch to the "On" position.
5. Thoroughly examine the treatment area, keeping the lamp at least two (2) inches from the skin. Under the lamp, problem areas will be clearly visible.

Important: Never look or allow client to look directly into the ultraviolet light. Never allow the lamp to touch the client's skin.



6. If client's skin condition indicates bright yellow, he/she may have a viral or fungal infection on their skin. Discontinue the session and refer your client to a physician or dermatologist.

Color Conditions Indicated:

White fluorescent: Thick corneum layer, dry dehydrated skin

White spots or debris: Layer of skin combined with dead cells, scars and dry patches

Blue-white: Dehydrated skin lacking moisture

Purple fluorescent: Normal healthy hydrated, lubricated skin

Light violet: Dehydrated

Yellow spots: Clogged pores, comedones

Pink/Reddish: Oily skin

Brown: Hyper-pigmentation

Yellow fluorescent Film: Fungal or viral infection. (Refer client to a physician)

7. When the examination is complete, turn the Wood's lamp "Off" by pressing the On/Off switch. Always store in the holder.

Caution: Do not touch the bulb. This will result in bulb browning.

Maintenance

1. Unplug the lamp before cleaning. Do not immerse the lamp or any of its parts in liquid.
2. Use a sponge and hospital-grade disinfectant to clean the surfaces of the lamp. Allow it to dry.
3. Use a mild glass cleaner to clean the magnified viewing lens.

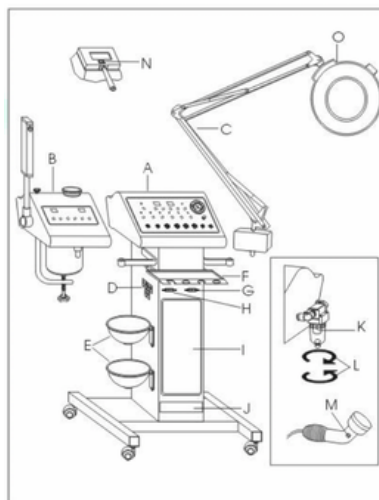
Troubleshooting

If problems are experienced with the operation of the Wood's lamp, please consult this troubleshooting guide before calling technical services at 1-800-418-0830. If the lamp does not turn on, check to ensure that:

- The main power switch of the 15-in-1 unit is set to the "On" position.
- The Wood's lamp is plugged into the main unit.
- The bulbs are properly seated.

Hot Towel Cabinet

1. Put the towel into the bracket of heated box and then close the door.
2. Connect to the power, open the left side of power switch, it can proceed the heat preservation and disinfect. After disinfecting, close the power switch. Please open the power switch of right side when needing ultraviolet ray.



Towel/Tool Basins

Convenient and easy storage of your implements, tools and towels. Located as part (E) in picture from previous page.

Operation steps of Ultrasonic

Ultrasonic utilizes sonic vibrations; it works one million times per second (1 MHz). The ultrasonic wave could and invisible appeared fine line, also lift the invisible appeared fine line, also lift the skin result for younger and healthy look. Ultrasonic generate frictional heat which accelerate blood circulation, muscle relaxation, and decompose the cellulite to break down exceed fat. NV-07 Ultrasound with 2 probes provided non-surgical lifting. This machine utilizes sonic vibrations to reduce lines leaving the skin firm and smooth.

1. After selecting the function, Default mode is “Eye”, then choose the mode “Eye, Face”, set the power, treating time, then touch “Start” and the system starts to work.
2. You can adjust the power trough the treatment step by step. If you want to change the mode, please touch “Pause”, and then select the mode. And touch “Stop” can stop the system and turn back the default mode.

a. Face Treatment

- (1). Select the face probe (big one)
- (2). Select output intensity to your need
- (3). Press mode to select Pulse or Continuing wave, pulse/continuing wave indicator will light on.
- (4). Apply the Probe working around the Eye area.

b. Eye treatment

- (1). Select the eye probe (small one)

Cold and Hot Hammer

1. Put the plug of cold and hot hammer into (11) to connect switch, opening the whole power switch in host back..
2. Press the key (10), start key (15) refrigeration treatment beginning.
3. Regulate the time key (16) can set a time for needing. (Acquiesce time always is 20 minutes). Can according to each customer’s demand and then set treatment time.

Attention: Hot function will work when the cool function is working. After removing spots or nutrients that penetrate into the skin you can use the cool function for calming and cooling down the skin. It will reduce redness.

Detectors for cool treatment and hot treatment:

- A. Detector for cool treatment: It is very gentle, makes the sensitive skin an ice cool feeling removes the red spots, calms and releases the pains. Massages the face muscles by grains on the face (move slowly in straight line or in circle).
- B. Detector for hot treatment: It gives a warm feeling, helps with the absorption of products, accelerates the facial blood circulation, and gets rid of the unnecessary fats. Massages the face muscles by grains on the face, different skin with different setting time.

Preparation before the treatment:

Prepare the necessary apparatus and additional normal skin creams. Tell your client the needed time for the whole

process, cool treatment or hot treatment, so as to let the client have psychological preparation on mind.

1. Clean the skin before treatment, using creams or lotions.
2. Sterilize the stick for cool treatment with medical alcohol or D-209.
3. Turn on the switch according to the operation process, the switch at the front side is for detector of the cool treatment, the one at the back side is for the detector of hot treatment.

Function:

A. Massage effects: Relax the muscles with fine massage to activate skin cells. With high-speed massage the fat and it can be reduced.

B. Warming and heating effects: The skin inside will be warm and heated to accelerate the blood circulation and lymph circulation. It makes the metabolism of the cells go better and also activate the metabolism of the skin surface. The skin looks younger and the fat will be easily lost.

Warning:

1. When the cool function stops, the detector of the cool treatment will still be very hot because the heat can be conducted.
2. Be sure close the power switch after use the ultrasonic instrument in order to prevent the ultrasonic bar to burn the skin and damage it.
3. When using the towel complete, please close the power switch on the disinfectant light, in order to prevent disinfecting light stabs and wounded eyes.
4. When using facial vapor, because of the cup of water and the heated vapor, please do not touch the water cup by hand or stand too near the vapor in order to prevent burning the skin.
5. When use the skin vibration function, needing to changes another skin brush, please close the power switch ad then change, in order to prevent unnecessary hurt.
6. When using electrotherapy function, because the electrotherapy tube glass is easily broken, one must be careful when using it in order to prevent unnecessary injuries.

Diamond Microdermabrasion:

Microdermabrasion is a skin-freshening technique that helps repair facial skin that takes a beating from the sun and the effects of aging. The plastic surgeon uses a device like a fine sandblaster to spray air together with the diamond tips across the face, mixing gentle abrasion with suction to remove the dead, outer layer of skin. As with other skin rejuvenation techniques, more than one treatment may be needed to remove fine wrinkles and unwanted pigmentation. Microdermabrasion is effective in reducing fine lines, "crow's feet", age spots and acne scars. It stimulates the production of skin cells and collagen. It has proven to be a very popular nonsurgical procedure.

Benefits:

- Virtually has no side effect.
- Provides the skin with a fresh healthy-looking glow.
- Nonsurgical, safe, effective "lunch hour" procedure.
- Effective on all skin colors and types.
- No anesthetic required.
- Excellent for skin sensitive to chemical procedures.
- Normal activities can be resumed immediately.

Operation:

1. Prepare cold towels or others that are similar. The towel should be damp, not wet.
2. Sterilize spray probe
3. Put on disposable latex gloves and mouthpiece.
4. Prepare the skin surface for treatment by first cleansing the area using chilled towels. This will remove any residual cleansing product left on the skin.
5. Make sure the skin is dry to the touch.
6. Take the spray probe, make sure, especially the cap, it is either property sterilized or replaced.
7. Begin treating.

8. Once the treatment is completed, the user must cool the treated surface of the skin by applying cold towels. Keep doing this until the skin becomes cool.
9. The skin has just experienced an abrasive treatment. It is normal that there may be some redness as well as a warm effect.
10. Make sure the clients do not use any other abrasive product on the skin, as it may cause an adverse reaction.
11. Adjust the intensity according to the suitable feeling of clients.

Note: However, due to the nature of its treatment, it is to be used *ONLY* by certified personnel. Any violations of the above will void the warranty and the operators should be responsible for any damages to the systems or clients.

PROCESS AND GUIDE

1. **Precision:** Nine different types of tip shape and diamond crystals sizes, which used in different part of body, even the eye section. Selecting the appropriate tip number, along with adjustable vacuum, allows for controlled abrasion. Full body microdermabrasion before slimming program, acne armed cellulite etc. Eye section is especially for wrinkles, blackheads, whiteheads etc. Scars, fine lines, sun damaged skin focused on the bigger treatment part
2. **Durability:** The diamond surface allows for an extremely long life.



3. Safety:

By eliminating aluminum oxide crystals, there is no risk of particles remaining embedded in the skin. Neither patient nor clinician has to breathe aluminum oxide dust, and the treatment room remains clean. This non-invasive skin care treatment can be completed in a short -period of time and without pain. This skin care treatment is ideal for people on the go. There is no downtime from work or social activities.

Treatment Scheduled Table

Treatment	Frequency (days)	Total Visits
Face Peeling	6-10	3-5
Fine Lines	7-13	6-8
Neck	12-14	3-5
Acne Scars	7-12	8-10
Hyper pigmentation	7-12	8-10

Operation Steps



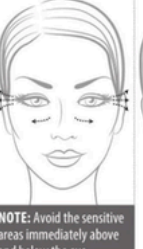


- 1.) Push in the movable ring of copper nozzle at the hand piece, and pull out the 6x4 size vacuum hose. Then push in the black plastic ring on the vacuum hose.
- 2.) Insert a cotton swab into the Diamond Head, then tight up the Diamond Head on the hand piece. Remove the cotton swab after every treatment.
- 3.) Turn on the power switch.
- 4.) Adjust the vacuum intensity by Vacuum Regulator according to the following reference table, the intensity displays on Vacuum gauge and check with client for comfort.
- 5.) Once the treatment is completed, the user must cool the treated surface of the skin by applying cold towels. Keep doing this until the skin becomes cool.
- 6.) The skin has just experienced an abrasive treatment. It is normal that there may be some redness as well as a warm effect.
- 7.) Make sure the clients do not use any other abrasive product on the skin, as it may cause an adverse reaction.
- 8.) Adjust the intensity according to the suitable feeling of clients.

Note: Due to the nature of its treatment, it is to be used ONLY by certified personnel. Any violations of the above will void the warranty and the operators should be responsible for any damages to the systems or clients.

- 9.) Use the incline area of the hand piece to contact with the skin surface. Proceed with a slow sliding motion. Do not place the hand piece at one spot for too long, doing so will cause harm to the skin.
- 10.) Adjust the intensity knob by the vacuum regulator slowly from minimum to maximum. Do not set the flow rate to maximum unless it is necessary! This is for better comfort intensity.
- 11.) Gently stretch the skin with your thumb and finger then glide the hand-piece 2-3 times over the area being treated. Then cross again in different directions to prevent streaking lines as in the picture. Brush strokes or polishing motions may be used in different sites.
- 12.) After treatment, brush off all remaining dead skin with a soft brush and rinse with damp sponges or damp cool towel.
- 13.) Allow skin to dry then apply desired skin product.
- 14.) Make sure to apply sunscreen lotion after treatment is finished to protect skin from UV light.
- 15.) To clean the Diamond Head, use toothbrush or cotton swab damped with a little alcohol to wipe off the dirty impurity, and then use UV light or high temperature for sterilization.

Diagram of Suggested Movements and Areas for Dermabrasion

- 1.) Push in the movable ring of copper nozzle at the hand piece, and pull out the 6x4 size vacuum hose. Then push in the black plastic ring on the vacuum hose.
- 2.) Insert a cotton swab into the Diamond Head, then tight up the Diamond Head on the hand piece. Remove the cotton swab after every treatment.
- 3.) Turn on the power switch.
- 4.) Adjust the vacuum intensity by Vacuum Regulator according to the following reference table, the intensity displays on Vacuum gauge and check with client for comfort.
- 5.) Once the treatment is completed, the user must cool the treated surface of the skin by applying cold towels. Keep doing this until the skin becomes cool.

AREA	Cheeks	Around Lips & Chin	Around Eyes	Forehead	Nose
MAX LEVEL	3	2	1	4	4
ROUTINE					

NOTE: Avoid the sensitive areas immediately above and below the eye.

Safety Warning

Important Notice of Caution before using this machine:

Never operate this equipment on a person who has or suffers from the following medical conditions described below. *(The salon or operator may consider having a client sign a waiver to the effect that he/ she is free of any poor health conditions.)*

- Heart Disease
- Heart Murmur or Irregular Heart Rate
- Has a pacemaker or other type of heart rate balancer
- Pregnancy
- Epilepsy
- Alcoholism
- Ulcers
- Disease of Stomach, Intestine, Liver, or Pancreas
- Breast Cancer
- Undergoing treatment for any form of Cancer
- Had a major surgery within the past year
- Asthma
- Cold, Flu or upset stomach
- Any serious illness or disease not listed above

Do not use on these areas:

- Sensitive skin
- Skin rash
- Damaged, inflamed or infected skin
- Surgical scar less than 12 months old
- Swollen skin
- Probes cannot be pointing to the eyeball
- Genitals

Cautions

- Always begin treatment conservatively and observe the effects by the touch and appearance of the skin. A vacuum power that is too high or too big may cause an inflammatory response.
- Edema and erythema can occur following treatment, but will resolve in a few hours
- Overly aggressive techniques can cause mild flaking over the next 3-4 days. Epidermis that is treated too aggressively can lead to bleeding in the superficial dermis.
- Diamond Dermabrasion should not be used on sensitive areas such as eyelids. The eyelids should be closed at all times during the procedure and may be covered with damp cotton pads
- The following areas are considered inappropriate for treatment: Skin tumor, moles, birthmark, lips, eyes, herpes, skin cancer and liver spots
- Do not modify or attempt to repair the machine, contact the technician for maintenance

Troubleshooting

If the machine does not function properly, please follow these procedures before requesting maintenance.

- Low suction power/ low vacuum pressure:
 - Please check the power hose as it should be connected well to the socket and the hand pieces. Next turn on the Vacuum Regulator to the maximum and start the Diamond Dermabrasion. Use your finger to block the hole of the hand pieces. Normally the vacuum gauge can reach the 24 inch Hg.
 - Please check the O ring in the Diamond pens and O ring in the socket! If you cannot settle the problem, please contact your distributor.
 - Don't open the machine by yourself without the technician guidance!
- No response when you turn on the power:
 - Please exchange the fuse and connect the power cord correctly. If problem is not resolved please contact Skin Act at 818-834-6640.

Overall Dimensions and Specifications

Overall Dimensions: 28" W x 20" D x 36 - 1/2" H
Steamer arm: 23 - 1/2"
Magnifying lamp: 24" (folded) 54" (extended)
Electrical: 220V-240V or 120V / 50-60Hz or 60Hz
High-frequency: Maximum 1 amp
Galvanic, rotary, and vacuum: 4 amps
Magnifying lamp: 22 watts
Steamer: 10 amps
Weight: 99 LBS
Power: 1120W or 1000

Warranty Statement

The manufacturer (the "warrantor") warrants to the original purchaser that this equipment will be free from defects under normal and proper operation for a period of one (1) year from the date of purchase. This warranty covers all parts and labor for that one (1) year period. This warranty shall not apply to any equipment that has been subjected to abuse, misuse and alteration of any type or to any defect or damage caused by repair, replacement, substitution, or use with parts other than parts approved by the manufacturer. The manufacturer shall not be liable for the loss of use of this equipment, loss of time or business, inconvenience or any other indirect, consequential, special or incidental damages due to defects covered by this warranty or any implied warranty. To implement this warranty, contact the dealer from whom you purchased the equipment. If necessary, you will be asked to return all, or the appropriate part, of the equipment. If warranted, the repairs will be performed at no charge and the equipment returned to you. Unit owner must prepay all shipping costs when returning items for warranty service. This limited warranty is the only written or express warranty given by the manufacturer. This warranty gives you specific legal rights but you may also have other rights, which may vary from state to state or province to province.

SKIN+ACT

Phone: 1-800-418-0830 or 818-834-6640

E-Mail: info@spaandequipment.com

Website: www.skkinact.com